

Injection Date : Wed, 11. Oct. 2023
Seq Line : 33
Location : 32
Inj. Vol. : 2 µl

Acq. Method : C:\Users\Public\Documents\ChemStation\1\Data\SE10OCT 2023-10-10
15-58-00\22010446C LCMS-6#.M

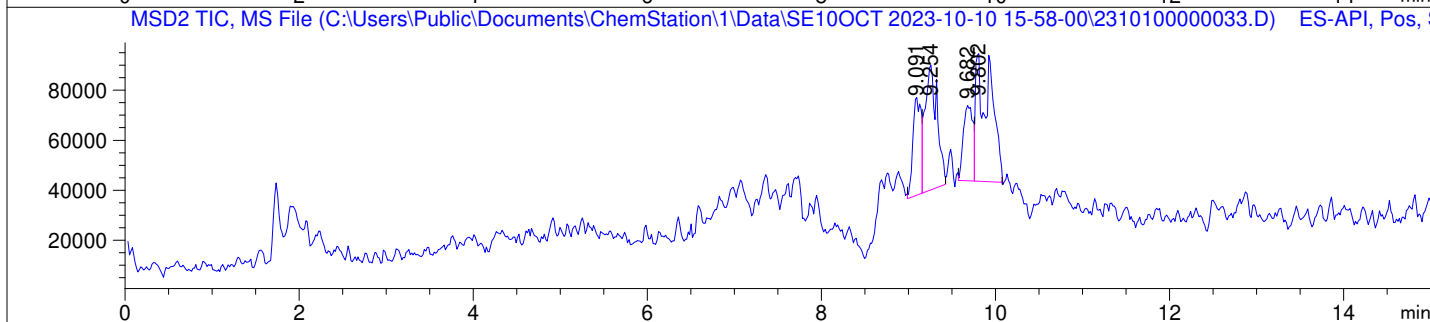
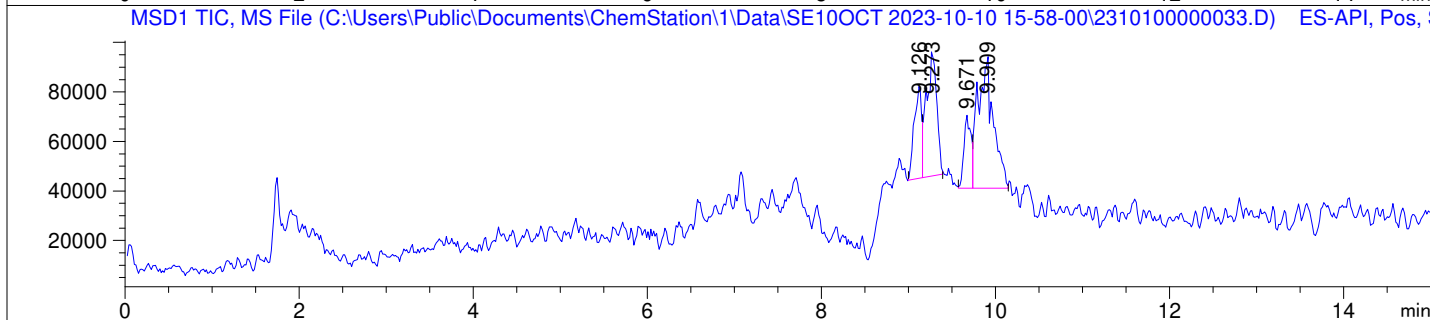
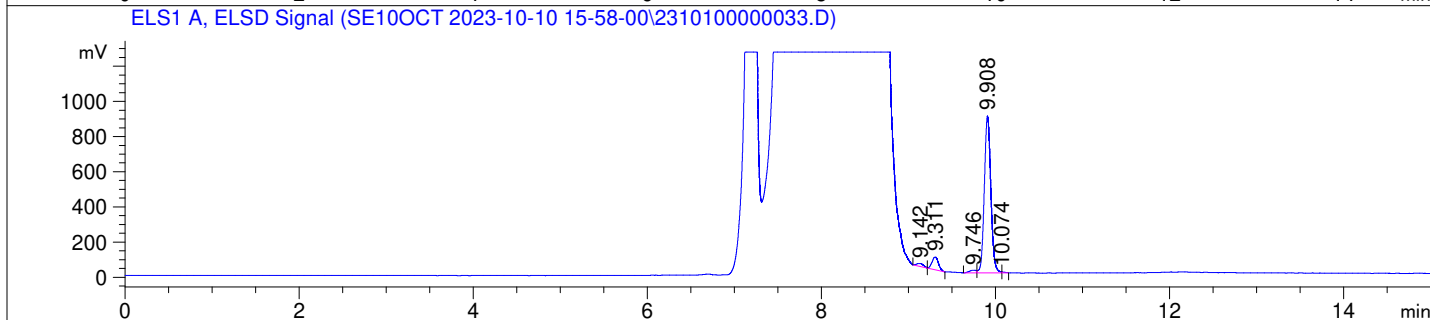
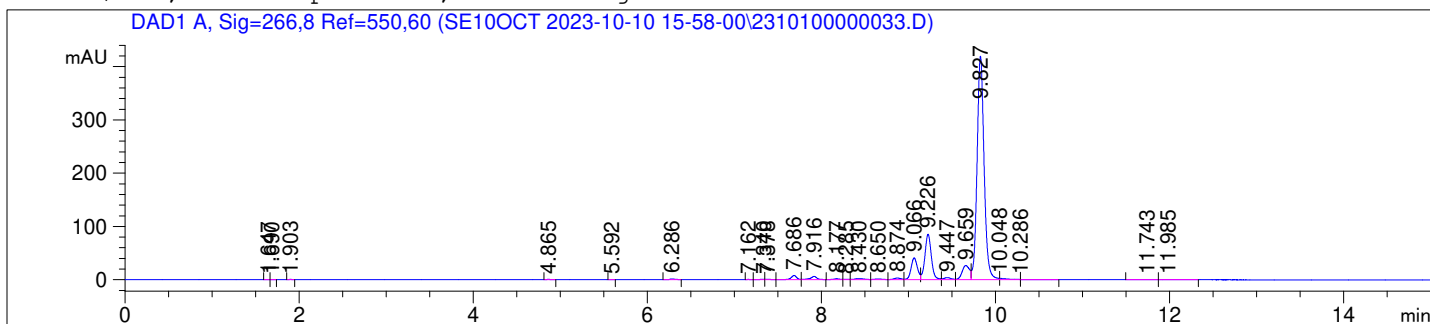
Analysis Method : C:\Users\Public\Documents\ChemStation\1\Data\SE10OCT 2023-10-10
15-58-00\22010446C LCMS-6#.M (Sequence Method)

Waters XBridge BEH Amide (4.6 x 150 mm, 2.5 µm); PN# 186006726

Mobile Phase A: 20mM Ammonium Acetate (aq) pH 8.2

Mobile Phase B: AcN

Mobile Phase A / Mobile Phase B: 5/95 (0 min) --> (10 min) --> 60/40 (5 min); Flow:
1.0 ml/min; MSD1 = positive; MSD2 = negative



DAD1 A, Sig=266,8 Ref=550,60

Peak #	Ret. Time [min]	Area [mV *s]	Area %
1	1.647	0.279	0.008
2	1.690	0.273	0.008
3	1.903	1.236	0.037
4	4.865	1.810	0.055
5	5.592	0.483	0.015
6	6.286	5.823	0.176
7	7.162	1.099	0.033
8	7.340	2.668	0.080
9	7.378	2.792	0.084
10	7.686	33.951	1.024
11	7.916	30.842	0.930
12	8.177	7.388	0.223
13	8.285	2.218	0.067
14	8.430	13.872	0.418
15	8.650	7.874	0.238
16	8.874	16.485	0.497
17	9.066	206.350	6.225
18	9.226	432.754	13.055
19	9.447	22.491	0.678
20	9.659	159.236	4.804
21	9.827	2340.502	70.608
22	10.048	16.178	0.488
23	10.286	5.671	0.171
24	11.743	1.306	0.039
25	11.985	1.213	0.037

ELS1 A, ELSD Signal

Peak #	Ret. Time [min]	Area [mV *s]	Area %
1	9.142	86.702	1.677
2	9.311	364.651	7.053
3	9.746	82.174	1.589
4	9.908	4627.097	89.491
5	10.074	9.844	0.190

